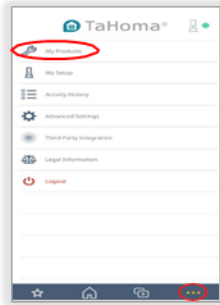


3. Adding a New Shade

1. Must have the remote.
2. Shades must be pre-programmed to the remote.
3. Keep the Tahoma within 25-35' of the shade(s).
4. Log Into Somfy Tahoma App.



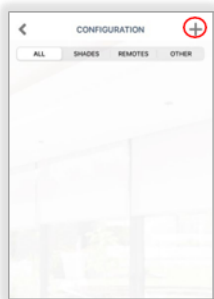
Select "My Products" from the App Menu.



Put remote on the shade's channel you wish to add to Tahoma.



Select "Next" on the app.



Select the "+" icon in the top right corner.



Select "RTS" products.



Press and hold Program button on back of remote until motor jogs once.



Select "Next" if the motor jogs.



Select "Interior Shades" as the device you are programming.



Enter a name for the shade and press "Select".



Select "Open" or "Close" to test the shade. Select "Yes" if it worked.



Select "Finish" to complete setup or "Add more devices" to add more shades.

HOME DECOR

WHOLESALE FABRICATORS

Made in America

SOMFY TAHOMA



Configuration Button

USB/Power Button

HOME DECOR WHOLESALE FABRICATORS
602-995-9659



REV 091522

1. Set Up Somfy Tahoma Account



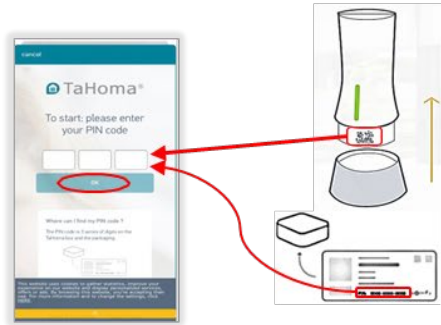
Download & open Tahoma North America app. Select "Create an account".



Select "Country & Language" then select "Start Activation".



Select the "Activate Tahoma" button.



Enter the Tahoma PIN code and Select "OK".

The PIN code is a series of digits on the base of the top of Tahoma or on the packaging.



Enter your email address and password. Select "Save and Continue".



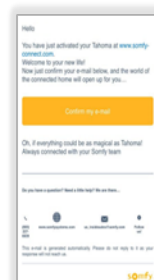
Enter all fields and select "Save and Continue".



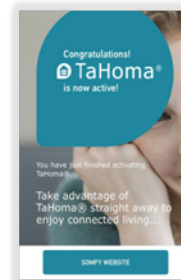
Review all documents, then select "Confirm".



Select "Close the Window" to have an activation link sent to your email.



Click on the link within 24 hrs to finalize Tahoma activation.



If link not clicked within 24 hrs, call Somfy Customer Service.



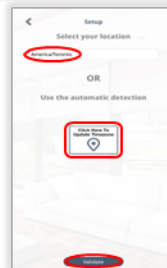
Press and HOLD the configuration button for 3 seconds until light turns blue. Select "Next".



Select "Scan" then remove the base of the Tahoma and scan the QR code with device camera.

2. Connect Somfy Tahoma to WIFI

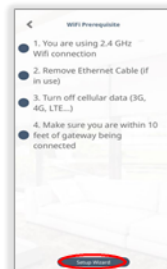
1. Tahoma can only connect to a 2.4 GHz WiFi Connection.
2. During setup, Ensure Tahoma is within 10 ft of WiFi Router. It can be moved after connection established.
2. Connect Tahoma to same WiFi network that device or tablet is connected to. And log into Somfy Tahoma App.



Verify location & timezone and select "Validate".



Select "Wi-Fi".



Check all prerequisites and select "Setup Wizard".



Enter password for WiFi network, select "Join" then "Next".



Select "Join" to connect Tahoma to network.



Light changes from red to amber, and may download updates during the process. Once connected, it will be green. Select "Finish".



Green: Connected to Network.



Red: Disconnected from Network.

Icon in top right corner of Tahoma menu page shows connection status.



WIFI Can be checked through the main page of the Tahoma App menu. Select the menu button in bottom right corner and select "My Setup".