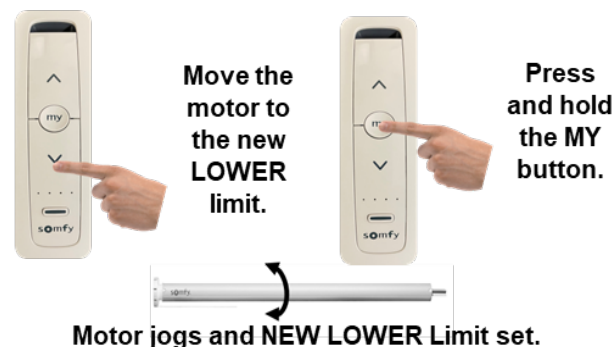
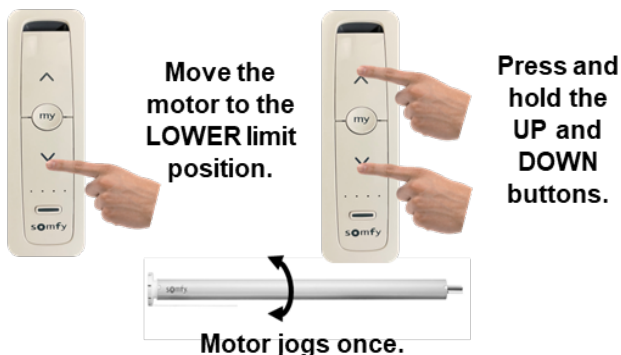
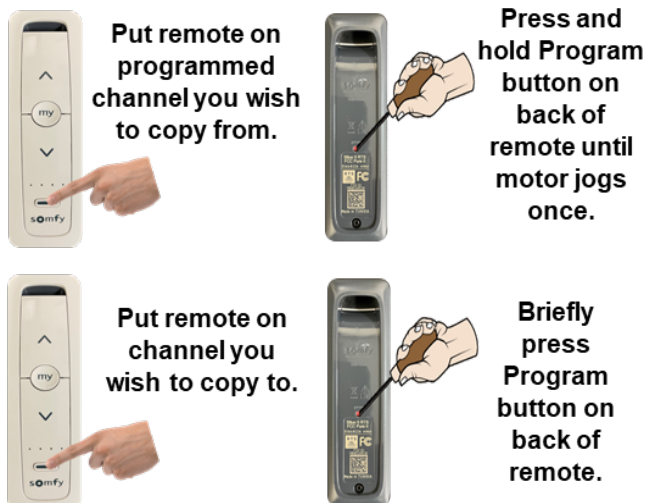


7. Resetting LOWER Limit Position



8. Copying to Another Channel

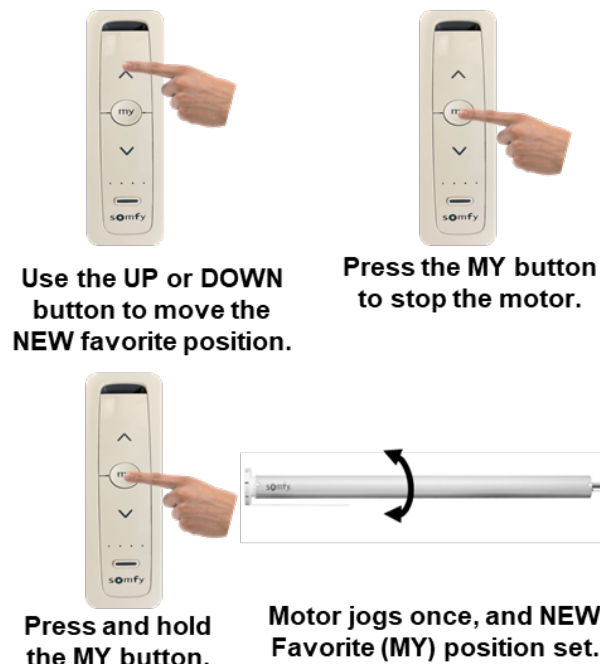


Motor jogs and channel is copied.

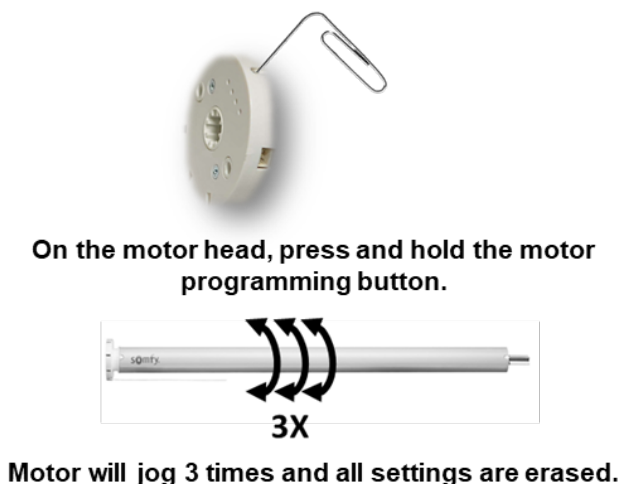


9. Adding or Modifying "MY" Position

ONLY ONE FAVORITE (MY) POSITION CAN BE SET:



10. Deleting All Memory and Reset Motor to Factory Settings



HOME DECOR

WHOLESALE FABRICATORS

Made in America

ST30-WireFree Motor Set Up Guide



Program Button



HOME DECOR WHOLESALE FABRICATORS
602-995-9659



REV 1004211

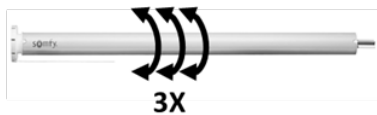
1. Waking Up Motor

IF MOTOR IS PRE-PROGRAMMED



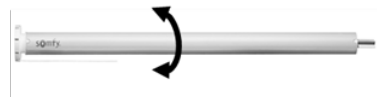
On the motor head, briefly press the programming button or plug in the charger. The shade will jog and is ready for operation.

IF MOTOR IS NOT PROGRAMMED



On the motor head, briefly press the programming button or plug in the charger. The shade will jog 3 times and is ready for programming.

2. Programming

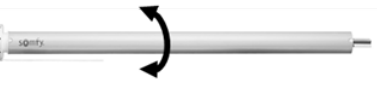


Press UP and DOWN at the same time on the remote.

Motor jogs once and is in programming mode

3. Change Motor Rotation

CHECK MOTOR ROTATION. IF CHANGE NEEDED:



Press and hold MY button.

Motor jogs once, motor rotates in opposite direction

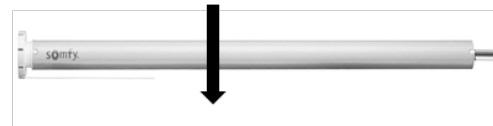
4. Upper & Lower Limit Position Setting



Press the UP or DOWN button to move the shade to the desired UPPER Limit position



Press the MY and DOWN button and release when shade begins to move. UPPER limit memorized.



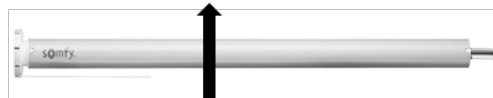
Shade will Continue moving down.



Press the MY button when shade reaches desired LOWER limit position.



Press the MY and UP button and release when shade begins to move. LOWER limit memorized.



Shade will continue moving up to UPPER limit.

5. Finalizing the Programming

ONCE THE SHADE STOPS AT THE UPPER LIMIT:



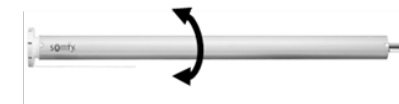
Press and hold the MY button.



The shade jogs and the UPPER & LOWER limit positions are set.



Briefly Press Program button on back of remote.



The shade jogs and the UPPER and LOWER limit positions are recorded.

6. Resetting UPPER Limit Position



Move the motor to the UPPER limit position.



Press and hold the UP and DOWN buttons.



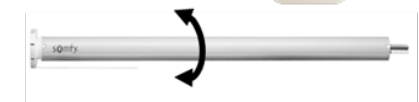
Motor jogs once.



Move the motor to the new UPPER limit.



Press and hold the MY button.



Motor jogs and NEW UPPER Limit set.